



SOUTH OKANAGAN EVENTS CENTRE • PENTICTON, BC • CANADA
PROMOTER'S GUIDE



South Okanagan Events Centre
853 Eckhardt Avenue West
Penticton, BC V2A 9C4 Canada
(P) 250.490.2460 (F) 250.490.2369
www.soec.ca



FACILITY INFORMATION

The South Okanagan Events Centre (SOEC), located in Penticton, British Columbia, is a 5,000 seat multipurpose venue. The SOEC is part of a 400,000 square foot complex that includes the Penticton Trade and Convention Centre, Okanagan Hockey School Training Centre and the historic Memorial Arena. The facility opened in September 2008, and is home to the Penticton Vees of the British Columbia Hockey League and the British Columbia Hockey Hall of Fame. The arena, which is owned by the City of Penticton, is managed by Spectra Facility Management. Spectra (spectraexperiences.com) manages the Penticton Trade and Convention Centre and the South Okanagan Events Centre, as well as nearly 120 other public assembly facilities around the world. Based in Philadelphia, PA, Spectra is a subsidiary of Comcast-Spectacor, one of the world's largest sports and entertainment companies.

This multipurpose facility can host hockey, basketball, family shows in any configuration, rodeos, diverse concert settings in various capacities and trade shows, and can accommodate just about any event.

DEMOGRAPHICS

- Okanagan/Similkameen total population - Penticton/Summerland south to the USA border and east to Princeton - **83,022** (StatsCan 2016)
- Penticton city population - **33,761** (StatsCan 2016)
- Median age - **52.4** (StatsCan 2016)
- Median income 15 years and older (male) - **\$28,495** (StatsCan 2016)
- Kelowna, West Kelowna, Peachland (30-50 min. North) population - **165,463** (StatsCan 2016)

MISSION STATEMENT

The South Okanagan Events Centre and Spectra Venue Management are committed to providing our customers, client and staff with a positive, safe and fun experience.

Spectra Venue Management is committed to reducing expenses, increasing revenues and promoting the South Okanagan Events Centre to the community.

CONTACTS

Dean Clarke • 250.490.2368 • dean.clarke@penticton.ca
General Manager
Regional Vice President of Business Development, Western Canada

Kevin Webb • 250.490.2358 • kevin.webb@penticton.ca
Assistant General Manager

JJ Straker • 250.490.2340 • jj.straker@penticton.ca
Director of Operations

Paul Johnston • 250.490.2363 • paul.johnston@penticton.ca
Director of Food & Beverage

Kevan Scott • 250.490.2391 • kevan.scott@penticton.ca
Senior Marketing Manager

Alysha Forrest • 250.490.2359 • alysha.forrest@penticton.ca
Senior Events Manager

Matthew Quick • 250.276.2144 • matthew.quick@penticton.ca
Box Office Manager

Events and artists hosted at the South Okanagan Events Centre

- 10 Years
- Aaron Goodvin
- Against Me
- Alan Jackson
- Alice In Chains
- Alexisonfire
- All Time Low
- Anthrax
- Arenacross (x3)
- Ari Neufeld
- Armchair Cynics
- Asking Alexandria
- Audio Adrenaline
- AVICII
- B.B. King
- Bad Company
- Bad Wolves
- The Band Perry
- Barenaked Ladies
- Beach Boys
- Beamer Wigley
- Behemoth
- BC Hockey Summer Classic
- BCHL Doyle Cup
- BC High School Wrestling
- BC Interior RV Show (x8)
- Big Wreck
- Bill Cosby
- Billy Talent
- Blue Man Group
- Blue Rodeo (x2)
- Blue Oyster Cult
- Boney M
- Brad Paisley (x2)
- Brothers Osborne
- Western Canada Brazilian JuiJitsu
- Brett Kissel (x2)
- Brit Floyd
- Brooks & Dunn
- Buckcherry
- Burn The Floor
- Cadillac Three
- Caked Up (Safe In Sound Festival)
- Cancer Bats
- Canadian Brazilian Jiu Jitsu (x3)
- Carrie Underwood
- Cazzette
- Celtic Illusion
- Celtic Thunder (x3)
- Cesar Milan
- Cheech & Chong
- Charlie Major
- Charlie Pride
- Chicago
- Children of Bodom
- Cirque Du Soleil - Crystal
- Cirque Du Soleil - Dralion
- Cirque Du Soleil - Varakai
- Cirque Musica
- Cirque Sublime
- Chris Lane
- Continental Cup of Curling
- Colt Ford
- Cole Swindell
- Cowboy Junkies
- Crystal Shawanda
- Dallas Smith (x3)
- Daniel Wesley (x2)
- Danko Jones
- Dean Brody
- Deap Vally
- Default
- Def Leppard
- Destroid (Safe In Sound Festival)
- Die Mannequin
- Dierks Bentley
- Dinosaur Pile Up
- Disney on Ice - High School Musical
- The Dudes
- Doctor P (Safe In Sound Festival)
- Doobie Brothers
- Dwight Yoakam
- Drake White
- Easton Corbin
- Emerson Drive
- Eric Church
- Extreme Ice Racing
- Faber Drive
- Fefe Dobson
- Feist
- Finger Eleven
- Flatley's Lord of the Dance
- Florida Georgia Line
- Flux Pavilion (Safe In Sound Festival)
- FMX Motocross (x2)
- Foghat
- Foreigner
- George Canyon
- George Thorogood
- Godsmack
- Gord Bamford
- Gordie Johnson
- Ghost
- Great Big Sea
- Harlem Globetrotters (x4)
- Havok
- Hearts of the West
- Heart
- Hedley
- High Valley
- Holiday Festival on Ice (CBC)
- Honeymoon Suite
- Howie Mandel
- Hunter Brothers
- In This Moment
- Inward Eye
- Jann Arden
- Jess Moskaluke
- Jerry Seinfeld
- Jillian Jacqueline
- John Fogerty
- John Mellencamp
- John Pardi
- Johnny Reid (x2)
- Jordan World Circus
- Journey
- Keith Urban
- Kenny Rogers
- Ke\$ha
- Kidz Bop
- King of the Cage
- Kip Moore (x2)
- Kristen Kelly
- Ladies of the Canyon
- Lauren Alaina
- Lamb of God (x2)
- Lara Johnston- The Latency
- Lipizzaner Stallions
- Lindsay Ell
- Little Big Town
- Livy Jean
- Loretta Lynn- Loverboy
- MAMMA MIA!
- Marianas Trench (x2)
- Marilyn Manson
- Martina McBride
- Matthew Curry
- Megadeth- Mehfil-E-Sartaaj
- Melissa Peterman
- Michael Bolton
- Michael Ray
- Midland
- Monster Spectacular
- Monster X Tour
- Mötley Crüe
- Murray Atkinson
- Newsboys
- Nice Horse
- Nitty Gritty Dirt Band (x2)
- Nikita Afonso- Nothing More
- NWA Wrestling
- Offspring (x2)
- Old Dominion (x2)
- One Bad Son (x2)
- OK Valley Throwdown (x3)
- One More Girl
- 2010 Olympic Torch Relay
- The Pack AD
- Papa Roach
- Paul Brandt (x2)
- Paw Patrol
- Penticton Indoor Triathlon (x2)
- Penticton Vees BCHL Hockey
- The Pink Floyd Experience (x2)
- The Price Is Right Live!
- Professional Bull Riding (x2)
- Randy Travis
- Rankin Family
- RAIN Beatles Tribute
- RCMP Musical Ride
- Reba McEntire
- The Reklaws
- Rascal Flatts
- Rihanna
- Ringo Starr
- Rita MacNeil
- Rock the Rink
- Roller Derby (x2)
- Safe In Sound Festival
- Savage After Midnight
- Scotties Tournament of Hearts
- Seether
- Sesame Street Live (x2)
- Shinedown (x2)
- Shawn Hookoff
- Sierra Noble
- Simon Townshend
- Simple Plan
- Slayer
- Social Code
- Sons of Sylvia
- So You Think You Can Dance
- Stone Temple Pilots
- Suicidal Tendencies
- Steve Miller Band
- Steven Lee Olsen
- Stitched Up Heart
- Styx
- SUM41
- Terraviva (Safe In Sound Festival)
- Terri Clark
- Testament
- The Stellas- The Tenors
- These Kids Wear Crowns
- Theresa Caputo
- Three Days Grace (x2)
- TNA Wrestling
- Toby Keith
- Tragically Hip
- Vancouver Canucks Young Stars Classic (x8)
- Vancouver Canucks NHL Training Camp
- Vanilla Ice
- Victoria Banks
- Volbeat
- Neal Schon "Vortex"
- Washboard Union
- Weezer
- We Will Rock You Musical
- "Weird Al" Yankovic
- West Coast Amusements
- World Junior A Hockey Challenge
- WWE Live! Road to Wrestlemania
- ZZ Top

EVENTS

SOUTH OKANAGAN
EVENTS CENTRE
soec.ca

BOX OFFICE INFORMATION

Tickets for all SOEC events may be purchased at the Valley First Box Office (at the SOEC). Box Office hours are Monday - Friday, 10:00am to 5:00pm with special hours on event days. The Box Office is located on street level at Gate 1 and features five windows. Tickets may also be purchased in advance by logging on to www.valleyfirsttix.com. Contact our Box Office Manager at **250.490.2144**.

MARKETING SUPPORT

The South Okanagan Events Centre can assist event promoters in all marketing needs. Specifically, the Marketing Department can recommend print and broadcast advertising outlets; assist in developing promotions with outside sponsors, and aid in writing and releasing publicity to local and regional news outlets through press releases and media advertisements. The department also provides an in-house media content production service for graphic design, video and audio needs. Contact our Marketing Manager at **250.490.2391**.

GROUP SALES

The South Okanagan Events Centre actively pursues the sale of tickets to groups for certain events in the facility. Through our in-house Group Sales Coordinator and established group sales contacts, your event can be pre-sold to our comprehensive database of local and regional companies, civic groups and organizations. Preferred customer mailing programs to selected lists of frequent ticket buying groups can also be designed to maximize sales and repeat business. Contact our Box Office at **250.490.2144**.



LOADING DOCK

- The load in area is located at the North end of the SOEC
- Loading Dock door dimensions: 9' wide x 10' high
- Loading Docks (2) have dock levelers
- Drive-in door: 13.5' wide x 14' high

SHOW POWER

- Stage Right: (2) 400AMP; (2) 200AMP; (3) 100AMP
- Stage Left: (1) 400AMP; (2) 100AMP
- All 120/208V 3 PHASE-5WIRE
- Cam Locks

ROOMS

- Production Office
- Show Office
- Up to Nine Dressing Rooms

PRODUCTION PARKING

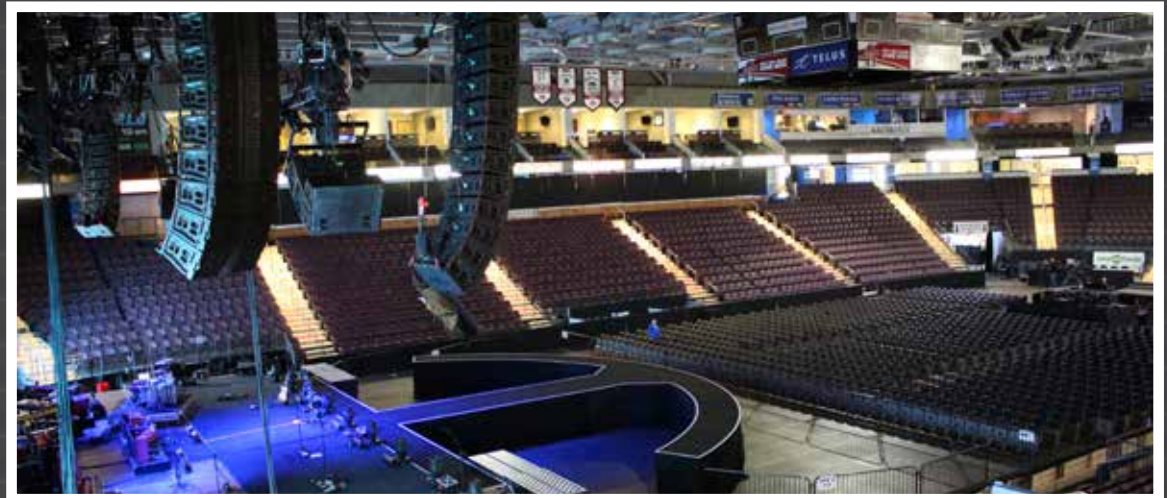
- Bus parking is available adjacent to the loading dock, and holds 8-10 buses and/or semi-trailers with additional parking available upon request through the Event Manager
- Shore power is available

IN-HOUSE CATERING

• Catering is available through Spectra Food & Hospitality Services; the exclusive on site catering team for the SOEC and PTCC. Please direct all catering inquiries to **250.490.2363**.

• Rooted in the delivery of fresh food and beverage, the culinary team is composed of experiential foodies. Led by our Executive Chef, the culinary team use local flavours to create sweetly satisfying dishes. Passionate about creating great food and menus, the Spectra culinary team will work with you to create a menu that impresses.

• Our food and beverage staff are closely following and adapting to the safety procedures set out by the Provincial Health Office.



SOUTH OKANAGAN EVENTS CENTRE
270° EVENT SEATING



END STAGE 270°
 Capacity: 5,581

SOUTH OKANAGAN EVENTS CENTRE
240° EVENT SEATING



END STAGE 240°
 Capacity: 5,318

SEATING MAPS

SOUTH OKANAGAN EVENTS CENTRE
180° EVENT SEATING



END STAGE 180°
 Capacity: 5,019

SOUTH OKANAGAN EVENTS CENTRE
3/4 HOUSE EVENT SEATING



3/4 HOUSE
 Capacity: 4,275

SEATING MAPS

SOUTH OKANAGAN EVENTS CENTRE
THEATRE (HALF HOUSE) EVENT SEATING



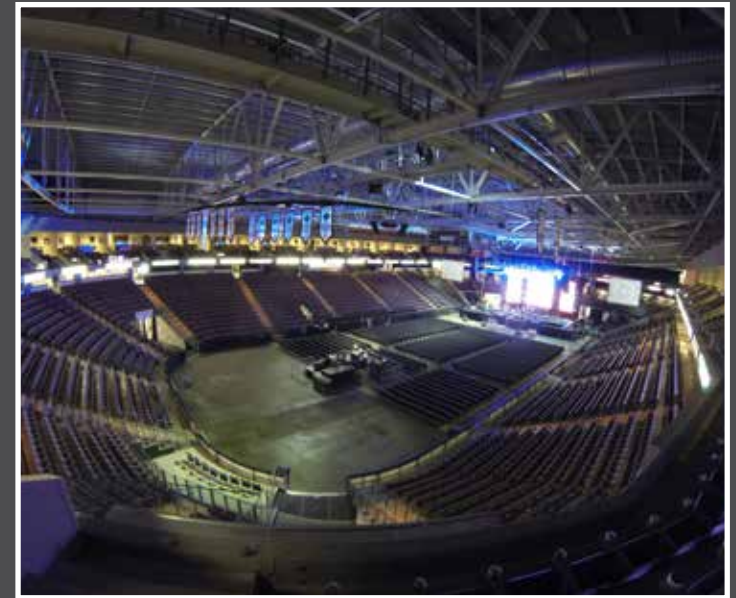
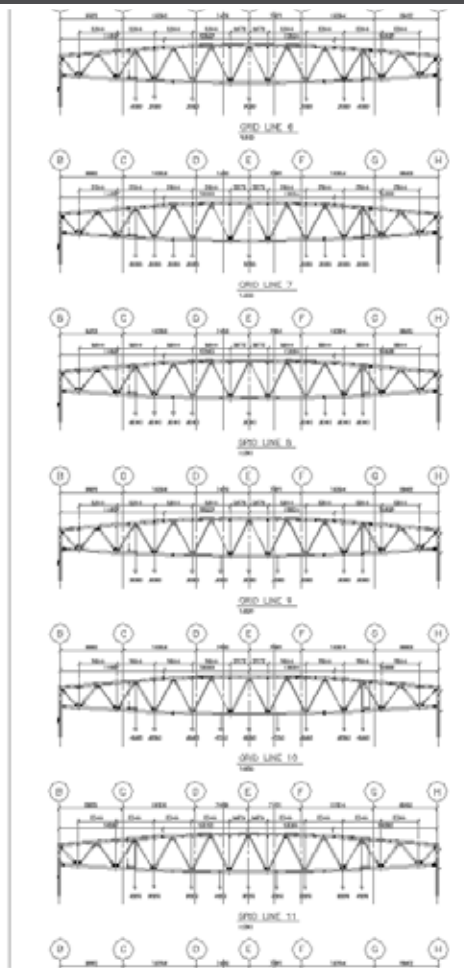
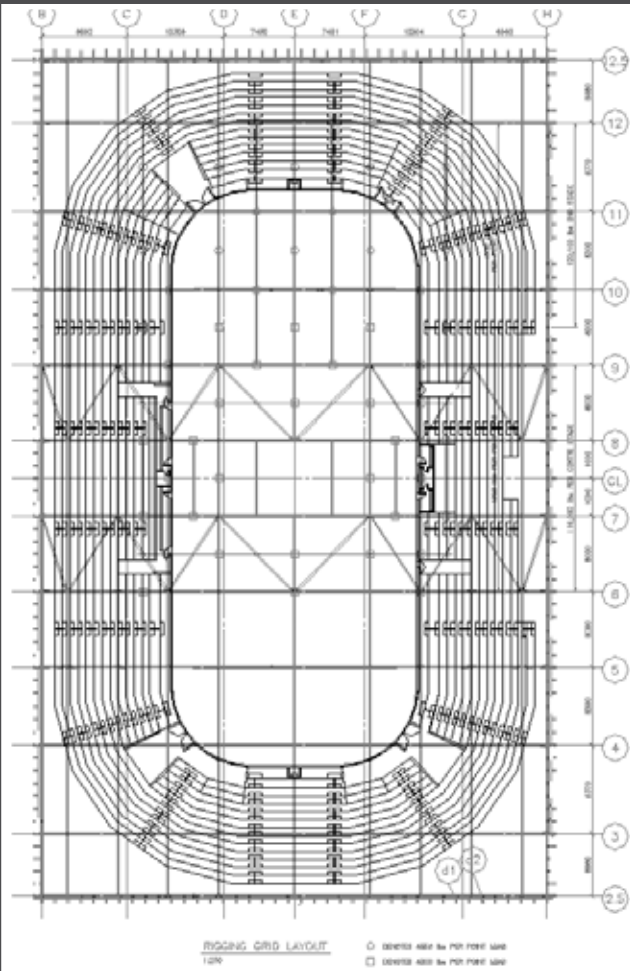
THEATRE (HALF HOUSE)
 Capacity: 3,617

SOUTH OKANAGAN EVENTS CENTRE
HOCKEY SEATING

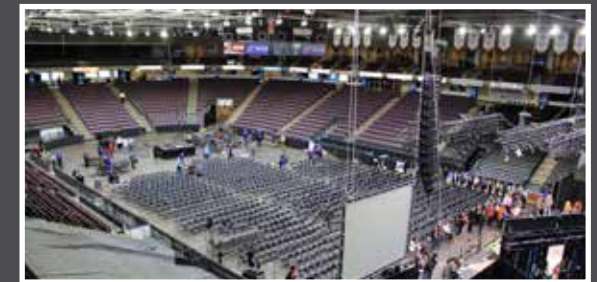


HOCKEY
 Capacity: 5,000

SEATING MAPS



- End-Stage: 4,500 lbs. per point and 120,000 lbs. total
- Centre-Stage: 4,000 lbs. per point and 116,000 lbs total
- 62' to high steel (centre, via beam clamps)
- 61' to high steel (dashers, via beam clamps)
- 44' to low steel
- Catwalk accessible - both low and high steel
- High Steel Rigging via Beam Clamps, Venue has 60 x 2 Ton
- Working Rope 2/1
- Score Clock is removable



RIGGING PLOT

SOEC COMPLEX PARKING



COMPLEX TENANTS

- BC Wine Information Centre
- Cascades Casino
- Cleland Theatre
- Interior Health
- Memorial Arena
- Okanagan Hockey Group Training Centre
- Okanagan Hockey Group Offices
- Penticon Visitor Centre
- Penticon Community Centre and Pool
- Penticon Trade and Convention Centre
- South Okanagan Events Centre

GENERAL PARKING	RESTRICTED PARKING	PTCC LOADING DOCKS
SOEC LOADING DOCKS	SOEC PRODUCTION LOT	

During certain SOEC Events, paid parking will be in effect in all General Parking lots. \$10 (Cash Only)

The South West General Parking Lot is reserved for SOEC VIP Passholders Only during SOEC Events.

← TO KELOWNA

↓ TO USA



SPECTRA
ver 18E26-03

COMPLEX PARKING



MILEAGE CHART

Penticton, BC to Dawson Creek, BC
13 hours, 55 minutes • 744 miles (1,197 km)

Penticton, BC to Calgary, AB
8 hours, 22 minutes • 416 miles (670 km)

Penticton, BC to Moose Jaw, SK
15 hours • 840 miles (1352 km)

Penticton, BC to Nampa, ID
9 hours, 38 minutes • 549 miles (883 km)

Penticton, BC to Everett, WA
5 hours, 27 minutes • 301 miles (484 km)

Everett, WA to Nampa, ID
8 hours • 511 miles (822 km)

Dawson Creek, BC to Prince George, BC
4 hours • 250 miles (402 km)

Dawson Creek, BC to Edmonton, AB
6 hours • 360 miles (579 km)

Dawson Creek, BC to Moose Jaw, SK
13 hours, 34 minutes • 826 miles (1329 km)

Edmonton, AB to Calgary, AB
3 hours, 0 minutes • 187 miles (300 km)

Calgary, AB to Moose Jaw, SK
6 hours, 46 minutes • 428 miles (688 km)

Everett, WA to Seattle, WA
0 hours, 31 minutes • 28 miles (45 km)

Seattle, WA to Nampa, ID
7 hours, 36 minutes • 487 miles (783 km)

1 **ANGEL OF THE WINDS ARENA**
angelofthewindarena.com

Angel of the Winds Arena
#200 2000 Hewitt Avenue
Everett, WA 98201 USA

- VENUE DESCRIPTION:
- 10,000 seat arena (configurations from 2,500 and up)
 - Community Ice Rink - NHL-size ice sheet
 - Edward D. Hansen Conference Centre - 11,000 sq. ft. ballroom

2 **SOUTH OKANAGAN EVENTS CENTRE**
soec.ca

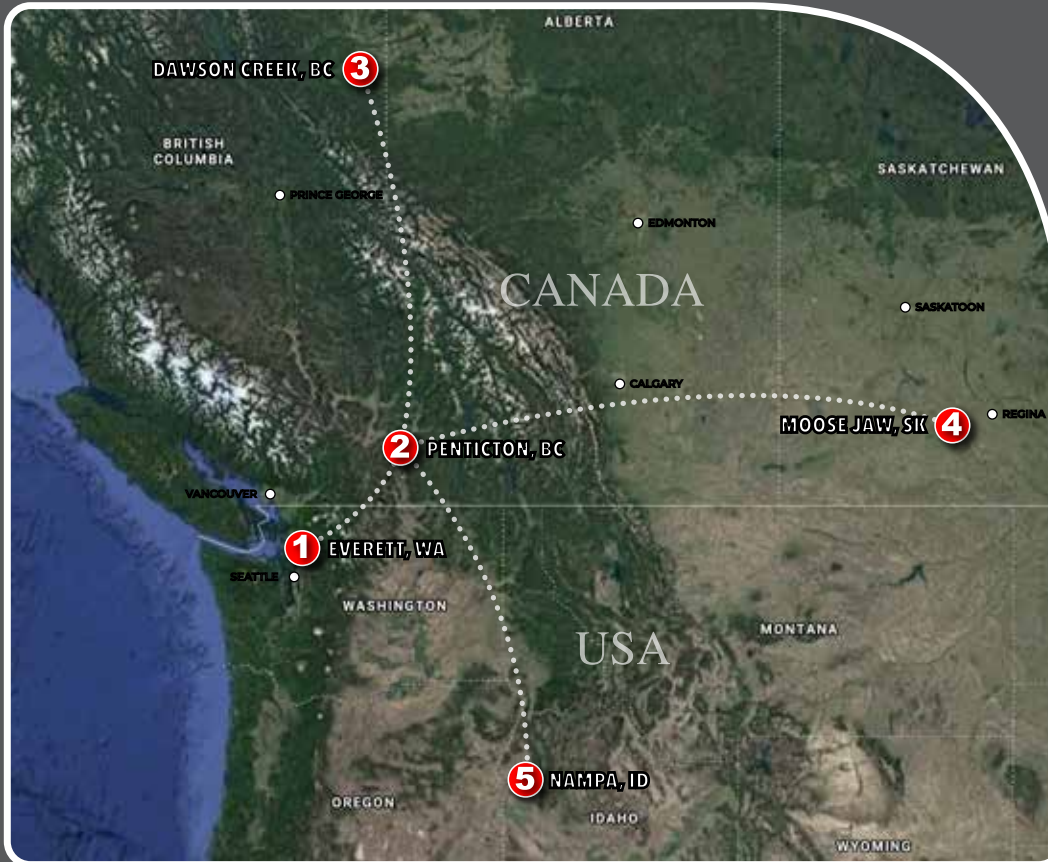
South Okanagan Events Centre
853 Eckhardt Avenue West
Penticton, BC V2A 9C4 CANADA

- VENUE DESCRIPTION:
- SOEC - 5,000 seat arena with Olympic-size ice sheet; OHS Training Centre - 400 seat arena with NHL-size ice sheet
 - Penticton Memorial Arena - 1897 seat arena (bleachers)
 - Penticton Trade and Convention Centre - 60,000 sq. ft.

3 **events centre**
Entertainment. All the time.
dawsoncreekeventscentre.com

Encana Events Centre
#1, 300 Highway 2
Dawson Creek, BC V1G 0A4 CANADA

- VENUE DESCRIPTION:
- 4,700 seat arena
 - Half-house / theatre configuration available - Part of the South Peace Multiplex which includes Agri-Centre and Aquatic Centre



4 **Mosaic Place**
mosaicplace.ca

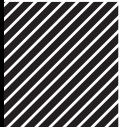
Mosaic Place
110 1st Avenue N.W.
Moose Jaw, SK S6H 3L9 CANADA

- VENUE DESCRIPTION:
- 210,000 square-foot facility featuring a 5,000 seat arena
 - Features 21 private suites and 132 club seats
 - Conference Banquet rooms for up to 900 patrons

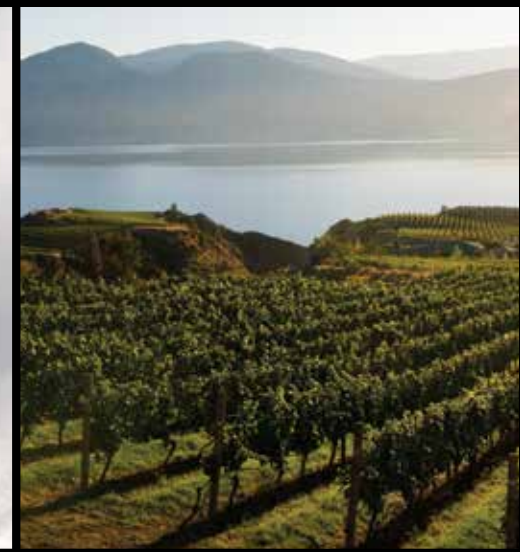
5 **Ford IDAHO Center**
fordidahocenter.com

Ford Idaho Center
16200 Idaho Center Blvd, Ste. 2
Nampa, ID 83687 USA

- VENUE DESCRIPTION:
- 2,500 - 12,000 seat arena
 - 10,500 seat amphitheatre
 - Horse Park with 97,000 Sq ft. indoor floor space and over 600 horse stalls.



LEARN MORE ABOUT OUR VENUES AND SERVICES
SPECTRAEXPERIENCES.COM



THE **CENTRE** OF ENTERTAINMENT IN THE OKANAGAN VALLEY



South Okanagan Events Centre
853 Eckhardt Avenue West
Penticton, BC V2A 9C4 Canada
(P) 250.490.2460 (F) 250.490.2369
www.soec.ca

